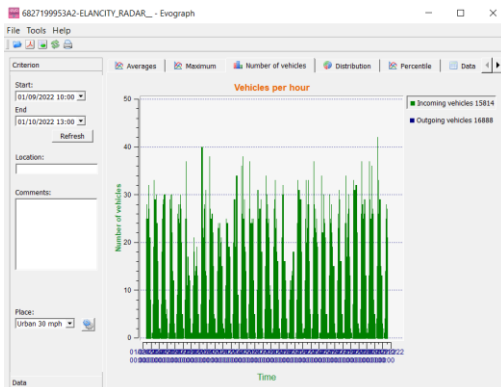


Beech Parish Council ASW Group report September 2022

AutoSpeedWatch Report

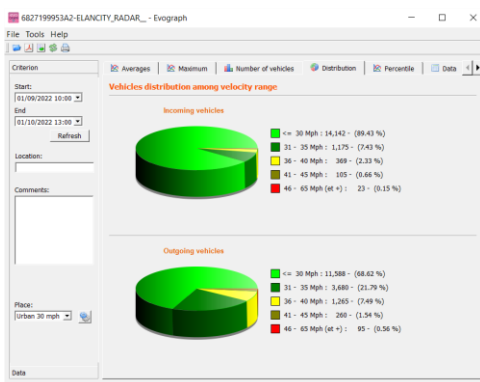
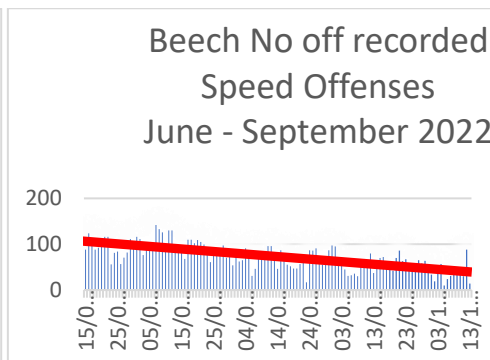
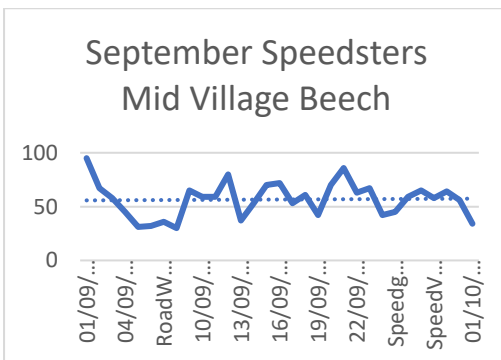
Traffic Volumes have remained steady for the last 6 months averaging about 35 vehicles per hour during the day, peaking to 45- 50 per hour during Rush hour, and School Hours.

SID Traffic Analysis



SID and AutoSpeedWatch Speed Analysis

The initial decrease in speeding vehicles following the introduction of the SID has waned and the persistent speedster just ignore clear warning signs.



We need assistance from the police to address the issue. Hopefully our Meeting on the 24th of October with the Chief Inspector for East Hampshire and a representative of the Safer Roads Policing Operations & Investigations team for Joint Operation Unit Road Policing Department Hampshire and Thames Valley Police.

AutoSpeedWatch Group

The group has been in communication with companies whose vehicles regularly break the 36 mph and average speed limits in Beech. The process is to call the company speak to someone who can address the issue. Confirm the issue by e-mail and receive an official apology.

2 examples of Apologies:

'Firstly, can I apologise profusely for this, this is not what our company is about, and I am very concerned about this. I do not find it acceptable and therefor have no explanation as to why.

I can assure you that this driver will be dealt with as well any others that we get this information about.

Can I ask if you have any more information to please send over to me as I would like to be able to deal with these as we hear about them.

Once again, I apologise for this.'

'Thank you for your email. I'm afraid I was unaware of this as it's not myself that regularly drives the company van. I completely agree with you that this is unacceptable behaviour and will take this up with my staff immediately.

I am very sorry and will ensure this does not happen again.'

The process rather than an 'officious' letter seems to work as we have had, to date, only one repeat offender after the groups has addressed the company in Question. We are pleased to say that even that offender is now law abiding when driving through Beech.

The parish council pointed out that it needs to protect its interest and standing. The Council wants to note that it is responsible for the Cameras. The ASW group has accordingly been asked to present a clearer proposal as to how the group makes that clear in their dealings with offenders.

Main offenders in liveried vehicles now seem to be Post Office Vehicles (though not our own postie), dust carts, Road Maintenance vehicles and Hampshire Equipment Services... Clerk to be provided with the evidence and communicate to the relevant public authorities that speeding through Beech endangers our Parishioners.

Communication with the Hampshire Police and the PCC

We provide the Hampshire Police with weekly reports on the vehicle travelling at the highest average speed from Kings Hill to the B339 and from the Village Centre entrance at 106 Medstead Road to the B339. These reports are forwarded to the Police Crime Commissioner's office, as is this monthly report.

Communication with Damian Hinds MP

I have exchanged several e-mails with Damian Hinds MP asking for support of our 20mph and AutoSpeedWatch initiative. Mote I can not share these as per *UK Parliament Disclaimer: this e-mail is confidential to the intended recipient*. However, it suffices to say he is supporting all our initiative and keen to know how we progress.